



2022 Calendar



About Grant Thornton

Grant Thornton is one of the world's leading organisations of independent assurance, tax and advisory firms. We help dynamic organisations achieve their progressive business goals by providing meaningful, actionable advice through a broad range of services.

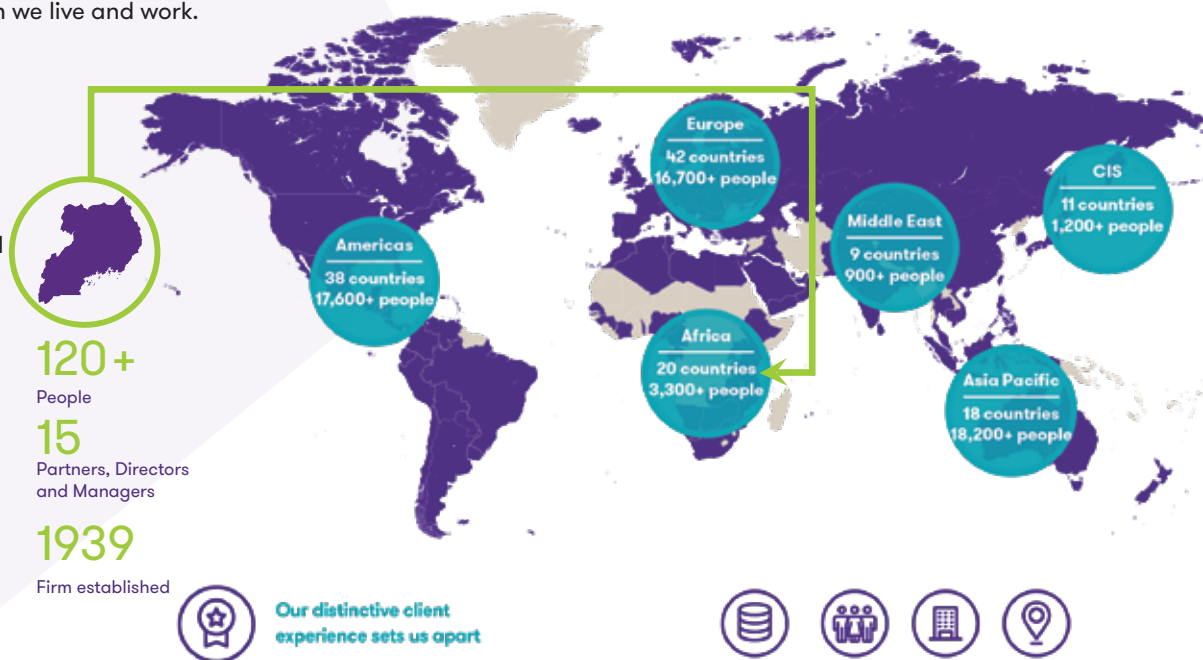
Proactive teams, led by approachable partners in these firms, use insights, experience and instinct to solve complex issues for privately owned, publicly listed and public sector clients. Over 58,000 Grant Thornton people, across 138+ countries, are focused on making a difference to clients, colleagues and the communities in which we live and work.

Contacts

Grant Thornton Taxation Services Limited
2nd and 3rd Floor, Lugogo One
Plot 23, Lugogo Bypass,
P.O. Box 7158,
Kampala, Uganda

T +256 200 907 333
+256 393 266 850
E info@ug.gt.com

gtuganda.co.ug





Grant Thornton Uganda is driven by a simple ambition: to be the most valued firm by all our stakeholders.

We are committed to playing a vital role in the society by advising businesses throughout their growth journey to exploit the potential of achieving their long term sustainable goals.

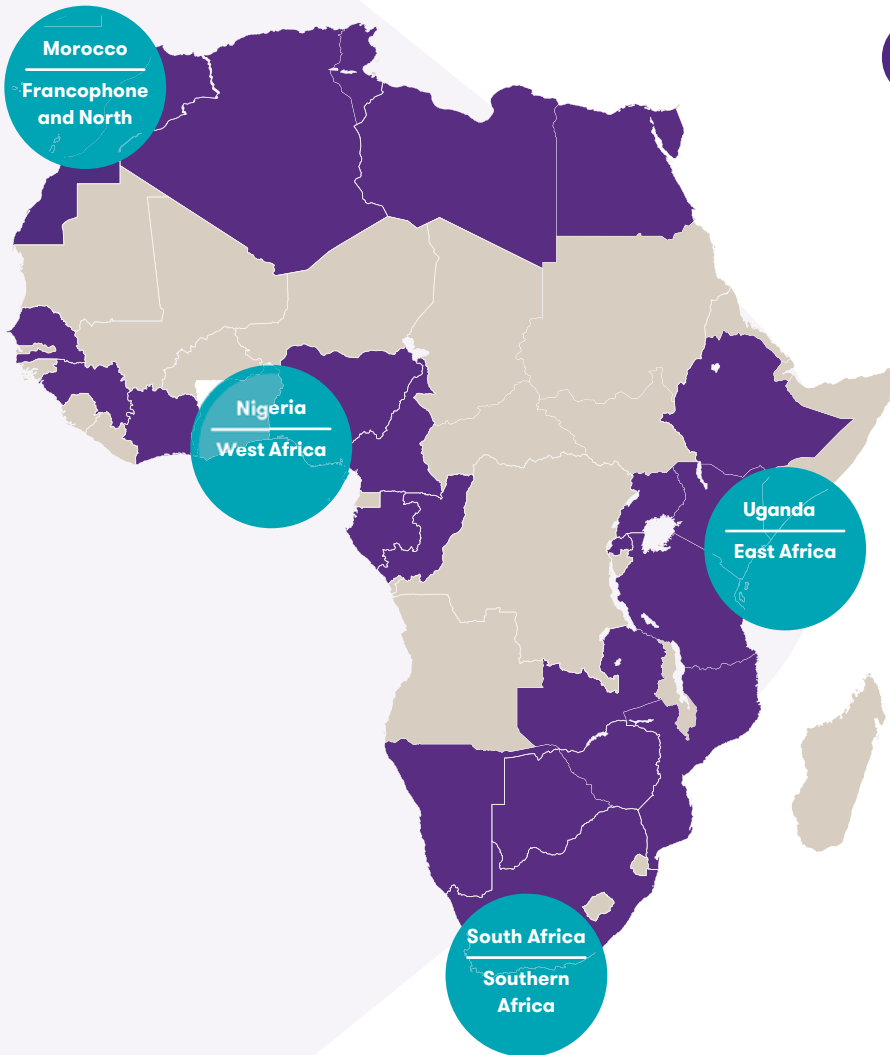
Anil Patel
Managing Partner
Uganda

Grant Thornton in Africa

We are organized to better serve
our clients across the continent.

Our Network Capability Team links our countries to facilitate quick and agile cross border collaboration. Our Regional Hubs actively initiate and coordinate Pan-African clients assistance and capacity building.

Servicing crossborder clients, building strategic partnerships, anticipating continental issues, bringing the best training and work experience to our people are the main objectives of these teams.



MONTHLY COMPLIANCES DUE IN JANUARY 2022

- 2nd** Filling of Return and Payment of Local Hotel Tax for the month of December 2021
- 15th** Filling of Return and Payment of Withholding Tax for the month of December 2021
- 15th** Filling of Return and Payment of VAT for the month of December 2021
- 15th** Filling of Return and Payment of Excise Duty for the month of December 2021
- 15th** Filling of Return and Payment of PAYE for the month of December 2021
- 15th** Filling of Return and Payment of NSSF for the month of December 2021

INCOME TAX COMPLIANCES DUE IN JANUARY 2022

- 31st** NI - with year end of July 2021
Final income tax return filling and payment of balance income tax liability
- 31st** NI - with year end of July 2022
1st Provisional return filling and 50% payment of full year's income tax liability
- 31st** NI - with year end of January 2022
Amendment of provisional return filling and the balance 50% payment of full year's income tax liability
- 31st** IND - with year end of July 2021
Final income tax return filling and payment of balance income tax liability
- 31st** IND - with year end of October 2022
1st provisional return filling and 25% payment of full year's tax liability
- 31st** IND - with year end of July 2022
2nd amendment of provisional return filling and 25% payment of full year's tax liability
- 31st** IND - with year end of April 2022
3rd amendment of provisional return filling and 25% payment of full year's tax liability
- 31st** IND - with year end of January 2022
4th amendment of provisional return filling and 25% payment of full year's tax liability

NI - Non-Individual Taxpayer IND - Individual Taxpayer

January 2022
01

	Sun	Mon	Tue	Wed	Thu	Fri	Sat
52	30	31					1
1	2	3	4	5	6	7	8
2	9	10	11	12	13	14	15
3	16	17	18	19	20	21	22
4	23	24	25	26	27	28	29

1st January, New Year

26th January, NRM Liberation Day

Financial services

Optimism is slowly returning to the global economy, but the financial services industry needs to regain the trust of public and private bodies. To succeed, forward-thinking organisations must examine every part of their business. The trick is to turn challenges into opportunities. Grant Thornton can help you to achieve this.

MONTHLY COMPLIANCES DUE IN FEBRUARY 2022

- 2nd** Filling of Return and Payment of Local Hotel Tax for the month of January 2022
- 15th** Filling of Return and Payment of Withholding Tax for the month of January 2022
- 15th** Filling of Return and Payment of VAT for the month of January 2022
- 15th** Filling of Return and Payment of Excise Duty for the month of January 2022
- 15th** Filling of Return and Payment of PAYE for the month of January 2022
- 15th** Filling of Return and Payment of NSSF for the month of January 2022

INCOME TAX COMPLIANCES DUE IN FEBRUARY 2022

- 28th** NI - with year end of August 2021
Final income tax return filling and payment of balance income tax liability
- 28th** NI - with year end of August 2022
1st Provisional return filling and 50% payment of full year's income tax liability
- 28th** NI - with year end of February 2022
Amendment of provisional return filling and the balance 50% payment of full year's income tax liability
- 28th** IND - with year end of August 2021
Final income tax return filling and payment of balance income tax liability
- 28th** IND - with year end of November 2022
1st provisional return filling and 25% payment of full year's tax liability
- 28th** IND - with year end of August 2022
2nd amendment of provisional return filling and 25% payment of full year's tax liability
- 28th** IND - with year end of May 2022
3rd amendment of provisional return filling and 25% payment of full year's tax liability
- 28th** IND - with year end of February 2022
4th amendment of provisional return filling and 25% payment of full year's tax liability

NI - Non-Individual Taxpayer IND - Individual Taxpayer

February 2022
02

	Sun	Mon	Tue	Wed	Thu	Fri	Sat
5							
6	6	7	8	9	10	11	12
7	13	14	15	16	17	18	19
8	20	21	22	23	24	25	26
9	27	28					

16th January, Archbishop Janani Luwum Memorial Day

Public sector

Across the globe, countries are moving towards leaner, more commercial, locally focused and responsive government and public sectors. At Grant Thornton, we are perfectly placed to help your organisation deliver this vision in the longer term.

MONTHLY COMPLIANCES DUE IN MARCH 2022

- 2nd** Filling of Return and Payment of Local Hotel Tax for the month of February 2022
- 15th** Filling of Return and Payment of Withholding Tax for the month of February 2022
- 15th** Filling of Return and Payment of VAT for the month of February 2022
- 15th** Filling of Return and Payment of Excise Duty for the month of February 2022
- 15th** Filling of Return and Payment of PAYE for the month of February 2022
- 15th** Filling of Return and Payment of NSSF for the month of February 2022

INCOME TAX COMPLIANCES DUE IN MARCH 2022

- 31st** NI - with year end of September 2021
Final income tax return filling and payment of balance income tax liability
- 31st** NI - with year end of September 2022
1st Provisional return filling and 50% payment of full year's income tax liability
- 31st** NI - with year end of March 2022
Amendment of provisional return filling and the balance 50% payment of full year's income tax liability
- 31st** IND - with year end of September 2021
Final income tax return filling and payment of balance income tax liability
- 31st** IND - with year end of December 2022
1st provisional return filling and 25% payment of full year's tax liability
- 31st** IND - with year end of September 2022
2nd amendment of provisional return filling and 25% payment of full year's tax liability
- 31st** IND - with year end of June 2022
3rd amendment of provisional return filling and 25% payment of full year's tax liability
- 31st** IND - with year end of March 2022
4th amendment of provisional return filling and 25% payment of full year's tax liability

NI - Non-Individual Taxpayer IND - Individual Taxpayer

March 2022
03

	Sun	Mon	Tue	Wed	Thu	Fri	Sat
9							
			1	2	3	4	5
10							
	6	7	8	9	10	11	12
11							
	13	14	15	16	17	18	19
12							
	20	21	22	23	24	25	26
13							
	27	28	29	30	31		

8th March, International Women's Day

Technology, media and telecommunications

Grant Thornton provides advice in digital media, hardware, internet, software, and technology services.

We can work with you to make the most of all opportunities and manage the inherent risks the industry has to offer, and help you stay one step ahead

MONTHLY COMPLIANCES DUE IN APRIL 2022

- 2nd** Filling of Return and Payment of Local Hotel Tax for the month of March 2022
- 15th** Filling of Return and Payment of Withholding Tax for the month of March 2022
- 15th** Filling of Return and Payment of VAT for the month of March 2022
- 15th** Filling of Return and Payment of Excise Duty for the month of March 2022
- 15th** Filling of Return and Payment of PAYE for the month of March 2022
- 15th** Filling of Return and Payment of NSSF for the month of March 2022

April 2022

04

INCOME TAX COMPLIANCES DUE IN APRIL 2022

- 30th** NI - with year end of October 2021
Final income tax return filling and payment of balance income tax liability
- 30th** NI - with year end of October 2022
1st Provisional return filling and 50% payment of full year's income tax liability
- 30th** NI - with year end of April 2022
Amendment of provisional return filling and the balance 50% payment of full year's income tax liability
- 30th** IND - with year end of October 2021
Final income tax return filling and payment of balance income tax liability if any
- 30th** IND - with year end of January 2022
1st provisional return filling and 25% payment of full year's tax liability
- 30th** IND - with year end of October 2022
2nd amendment of provisional return filling and 25% payment of full year's tax liability
- 30th** IND - with year end of July 2022
3rd amendment of provisional return filling and 25% payment of full year's tax liability
- 30th** IND - with year end of April 2022
4th amendment of provisional return filling and 25% payment of full year's tax liability

NI - Non-Individual Taxpayer IND - Individual Taxpayer

	Sun	Mon	Tue	Wed	Thu	Fri	Sat
13							
						1	2
14	3	4	5	6	7	8	9
15	10	11	12	13	14	15	16
16	17	18	19	20	21	22	23
17	24	25	26	27	28	29	30

15th April, Good Friday
18th April, Easter Monday

Real estate and construction

With the strong focus by the government on infrastructure projects to support economic growth, pockets of opportunity and optimism are emerging within the real estate and construction industry. At Grant Thornton, it's our goal to help you benefit from these opportunities and unlock your potential for growth.

MONTHLY COMPLIANCES DUE IN MAY 2022

- 2nd** Filling of Return and Payment of Local Hotel Tax for the month of April 2022
- 15th** Filling of Return and Payment of Withholding Tax for the month of April 2022
- 15th** Filling of Return and Payment of VAT for the month of April 2022
- 15th** Filling of Return and Payment of Excise Duty for the month of April 2022
- 15th** Filling of Return and Payment of PAYE for the month of April 2022
- 15th** Filling of Return and Payment of NSSF for the month of April 2022

May 2022
05

INCOME TAX COMPLIANCES DUE IN MAY 2022

- 31st** NI - with year end of November 2021
Final income tax return filling and payment of balance income tax liability
- 31st** NI - with year end of November 2022
1st Provisional return filling and 50% payment of full year's income tax liability
- 31st** NI - with year end of May 2022
Amendment of provisional return filling and the balance 50% payment of full year's income tax liability
- 31st** IND - with year end of November 2021
Final income tax return filling and payment of balance income tax liability
- 31st** IND - with year end of February 2022
1st provisional return filling and 25% payment of full year's tax liability
- 31st** IND - with year end of November 2022
2nd amendment of provisional return filling and 25% payment of full year's tax liability
- 31st** IND - with year end of August 2022
3rd amendment of provisional return filling and 25% payment of full year's tax liability
- 31st** IND - with year end of May 2022
4th amendment of provisional return filling and 25% payment of full year's tax liability

	Sun	Mon	Tue	Wed	Thu	Fri	Sat
18	1	2	3	4	5	6	7
19	8	9	10	11	12	13	14
20	15	16	17	18	19	20	21
21	22	23	24	25	26	27	28
22	29	30	31				

NI - Non-Individual Taxpayer IND - Individual Taxpayer

1st May, International Labor Day

Not for profit

Not for profit organisations are increasingly expected to deliver more, while at the same time facing cuts in government funding and voluntary giving. Grant Thornton understands the commitment and scrutiny within this industry and will work with you to address these challenges.

MONTHLY COMPLIANCES DUE IN JUNE 2022

- 2nd** Filling of Return and Payment of Local Hotel Tax for the month of May 2022
- 15th** Filling of Return and Payment of Withholding Tax for the month of May 2022
- 15th** Filling of Return and Payment of VAT for the month of May 2022
- 15th** Filling of Return and Payment of Excise Duty for the month of May 2022
- 15th** Filling of Return and Payment of PAYE for the month of May 2022
- 15th** Filling of Return and Payment of NSSF for the month of May 2022

June 2022

06

INCOME TAX COMPLIANCES DUE IN JUNE 2022

- 15th** Submission of Application for WHT exemption status for the period between July 2022 and June 2023
Note: This may change according to approach of URA by the time URA starts issuing the WHT exemption status¹
- 30th** NI - with year end of December 2021
Final income tax return filling and payment of balance income tax liability
- 30th** NI - with year end of December 2022
1st Provisional return filling and 50% payment of full year's income tax liability
- 30th** NI - with year end of June 2022
Amendment of provisional return filling and the balance 50% payment of full year's income tax liability
- 30th** IND - with year end of December 2021
Final income tax return filling and payment of balance income tax liability
- 30th** IND - with year end of March 2022
1st provisional return filling and 25% payment of full year's tax liability
- 30th** IND - with year end of December 2022
2nd amendment of provisional return filling and 25% payment of full year's tax liability
- 30th** IND - with year end of September 2022
3rd amendment of provisional return filling and 25% payment of full year's tax liability
- 30th** IND - with year end of June 2022
4th amendment of provisional return filling and 25% payment of full year's tax liability"

NI - Non-Individual Taxpayer IND - Individual Taxpayer

	Sun	Mon	Tue	Wed	Thu	Fri	Sat
22				1	2	3	4
23	5	6	7	8	9	10	11
24	12	13	14	15	16	17	18
25	19	20	21	22	23	24	25
26	26	27	28	29	30		

3rd June, Martyrs' Day | 9th June, National Heroes' Day
21st June, Father's Day

Consumer products

Emerging and evolving markets, and shifting consumer demand are creating new opportunities in food and beverage, retail & logistics, and automotive, with business leaders investing in new products, markets and distribution models. At Grant Thornton, we can help you turn these trends to your advantage while providing you with a clear route for growth.

MONTHLY COMPLIANCES DUE IN JULY 2022

- 2nd** Filling of Return and Payment of Local Hotel Tax for the month of June 2022
- 15th** Filling of Return and Payment of Withholding Tax for the month of June 2022
- 15th** Filling of Return and Payment of VAT for the month of June 2022
- 15th** Filling of Return and Payment of Excise Duty for the month of June 2022
- 15th** Filling of Return and Payment of PAYE for the month of June 2022
- 15th** Filling of Return and Payment of NSSF for the month of June 2022

July 2022

07

INCOME TAX COMPLIANCES DUE IN JULY 2022

- 31st** NI - with year end of January 2022
Final income tax return filling and payment of balance income tax liability
- 31st** NI - with year end of January 2023
1st Provisional return filling and 50% payment of full year's income tax liability
- 31st** NI - with year end of July 2022
Amendment of provisional return filling and the balance 50% payment of full year's income tax liability
- 31st** IND - with year end of January 2022
Final income tax return filling and payment of balance income tax liability if any
- 31st** IND - with year end of April 2023
1st provisional return filling and 25% payment of full year's tax liability
- 31st** IND - with year end of January 2023
2nd amendment of provisional return filling and 25% payment of full year's tax liability
- 31st** IND - with year end of October 2022
3rd amendment of provisional return filling and 25% payment of full year's tax liability
- 31st** IND - with year end of July 2022
4th amendment of provisional return filling and 25% payment of full year's tax liability

	Sun	Mon	Tue	Wed	Thu	Fri	Sat
26	31					1	2
27	3	4	5	6	7	8	9
28	10	11	12	13	14	15	16
29	17	18	19	20	21	22	23
30	24	25	26	27	28	29	30

NI - Non-Individual Taxpayer IND - Individual Taxpayer

Travel, tourism and leisure

Dynamic-businesses need to move with speed and purpose if they want to make the most of opportunities in travel, tourism, and leisure. We understand the global economic cycle and the trends in this industry, from social media and online travel agent impacts, to new age consumers, green operations and emerging market challenges. At Grant Thornton, we know exactly what it takes to succeed in this rapidly changing sector.

MONTHLY COMPLIANCES DUE IN AUGUST 2022

- 2nd** Filling of Return and Payment of Local Hotel Tax for the month of July 2022
- 15th** Filling of Return and Payment of Withholding Tax for the month of July 2022
- 15th** Filling of Return and Payment of VAT for the month of July 2022
- 15th** Filling of Return and Payment of Excise Duty for the month of July 2022
- 15th** Filling of Return and Payment of PAYE for the month of July 2022
- 15th** Filling of Return and Payment of NSSF for the month of July 2022

INCOME TAX COMPLIANCES DUE IN AUGUST 2022

- 31st** NI - with year end of February 2022
Final income tax return filling and payment of balance income tax liability
- 31st** NI - with year end of February 2023
1st Provisional return filling and 50% payment of full year's income tax liability
- 31st** NI - with year end of August 2022
Amendment of provisional return filling and the balance 50% payment of full year's income tax liability
- 31st** IND - with year end of February 2022
Final income tax return filling and payment of balance income tax liability
- 31st** IND - with year end of May 2023
1st provisional return filling and 25% payment of full year's tax liability
- 31st** IND - with year end of February 2023
2nd amendment of provisional return filling and 25% payment of full year's tax liability
- 31st** IND - with year end of November 2022
3rd amendment of provisional return filling and 25% payment of full year's tax liability
- 31st** IND - with year end of August 2022
4th amendment of provisional return filling and 25% payment of full year's tax liability

NI - Non-Individual Taxpayer IND - Individual Taxpayer

August 2022
08

	Sun	Mon	Tue	Wed	Thu	Fri	Sat
31							
32		1	2	3	4	5	6
33	7	8	9	10	11	12	13
34	14	15	16	17	18	19	20
35	21	22	23	24	25	26	27
	28	29	30	31			

Energy and natural resources

Well-thought plans and investment decisions are critical in dealing with the ongoing major changes in the energy and natural resources industry. Grant Thornton can help you understand and navigate the challenges, and make sure you have the solutions you'll need to take advantage of opportunities to unlock your potential for growth.

MONTHLY COMPLIANCES DUE IN SEPTEMBER 2022

- 2nd** Filling of Return and Payment of Local Hotel Tax for the month of August 2022
- 15th** Filling of Return and Payment of Withholding Tax for the month of August 2022
- 15th** Filling of Return and Payment of VAT for the month of August 2022
- 15th** Filling of Return and Payment of Excise Duty for the month of August 2022
- 15th** Filling of Return and Payment of PAYE for the month of August 2022
- 15th** Filling of Return and Payment of NSSF for the month of August 2022

INCOME TAX COMPLIANCES DUE IN SEPTEMBER 2022

- 30th** NI - with year end of March 2022
Final income tax return filling and payment of balance income tax liability
- 30th** NI - with year end of March 2023
1st Provisional return filling and 50% payment of full year's income tax liability
- 30th** NI - with year end of September 2022
Amendment of provisional return filling and the balance 50% payment of full year's income tax liability
- 30th** IND - with year end of March 2022
Final income tax return filling and payment of balance income tax liability if any
- 30th** IND - with year end of June 2023
1st provisional return filling and 25% payment of full year's tax liability
- 30th** IND - with year end of March 2023
2nd amendment of provisional return filling and 25% payment of full year's tax liability
- 30th** IND - with year end of December 2022
3rd amendment of provisional return filling and 25% payment of full year's tax liability
- 30th** IND - with year end of September 2022
4th amendment of provisional return filling and 25% payment of full year's tax liability

NI - Non-Individual Taxpayer IND - Individual Taxpayer

September 2022

09

	Sun	Mon	Tue	Wed	Thu	Fri	Sat
35							
					1	2	3
36							
	4	5	6	7	8	9	10
37							
	11	12	13	14	15	16	17
38							
	18	19	20	21	22	23	24
39							
	25	26	27	28	29	30	

Industrial products

Industrial products industry is one of the most complex and challenging industries. Consolidation, new competition and demanding new owners continue to reshape the competitive landscape, even turning marginal competitors into stronger ones. Grant Thornton understands how to navigate your toughest challenges, with an integrated approach that translates into more powerful results across the whole business.

MONTHLY COMPLIANCES DUE IN OCTOBER 2022

- 2nd** Filling of Return and Payment of Local Hotel Tax for the month of September 2022
- 15th** Filling of Return and Payment of Withholding Tax for the month of September 2022
- 15th** Filling of Return and Payment of VAT for the month of September 2022
- 15th** Filling of Return and Payment of Excise Duty for the month of September 2022
- 15th** Filling of Return and Payment of PAYE for the month of September 2022
- 15th** Filling of Return and Payment of NSSF for the month of September 2022
- 31** Filling of Return and Payment of Local Service Tax for the year 2020/2022

INCOME TAX COMPLIANCES DUE IN OCTOBER 2022

- 31st** NI - with year end of April 2022
Final income tax return filling and payment of balance income tax liability
- 31st** NI - with year end of April 2023
1st Provisional return filling and 50% payment of full year's income tax liability
- 31st** NI - with year end of October 2022
Amendment of provisional return filling and the balance 50% payment of full year's income tax liability
- 31st** IND - with year end of April 2022
Final income tax return filling and payment of balance income tax liability
- 31st** IND - with year end of July 2023
1st provisional return filling and 25% payment of full year's tax liability
- 31st** IND - with year end of April 2023
2nd amendment of provisional return filling and 25% payment of full year's tax liability
- 31st** IND - with year end of January 2023
3rd amendment of provisional return filling and 25% payment of full year's tax liability
- 31st** IND - with year end of October 2022
4th amendment of provisional return filling and 25% payment of full year's tax liability

NI - Non-Individual Taxpayer IND - Individual Taxpayer

October 2022
10

	Sun	Mon	Tue	Wed	Thu	Fri	Sat
39	30	31					1
40	2	3	4	5	6	7	8
41	9	10	11	12	13	14	15
42	16	17	18	19	20	21	22
43	23	24	25	26	27	28	29

9th October, Independence Day

Services

The service industry has grown consistently because there will always be a demand for human care and intelligence. To unlock growth in the industry, the work ahead will require proactive, far-reaching, often transformational changes, focused on serving customer preferences and continuous quality improvement. We know how to help you to face challenges. Grant Thornton is one of the world's largest professional services network of member firms. We can share with you our experiences in creating a unique identity and winning market share against tough competition.

MONTHLY COMPLIANCES DUE IN NOVEMBER 2022

- 2nd** Filling of Return and Payment of Local Hotel Tax for the month of October 2022
- 15th** Filling of Return and Payment of Withholding Tax for the month of October 2022
- 15th** Filling of Return and Payment of VAT for the month of October 2022
- 15th** Filling of Return and Payment of Excise Duty for the month of October 2022
- 15th** Filling of Return and Payment of PAYE for the month of October 2022
- 15th** Filling of Return and Payment of NSSF for the month of October 2022

INCOME TAX COMPLIANCES DUE IN NOVEMBER 2022

- 30th** NI - with year end of May 2022
Final income tax return filling and payment of balance income tax liability
- 30th** NI - with year end of May 2023
1st Provisional return filling and 50% payment of full year's income tax liability
- 30th** NI - with year end of November 2022
Amendment of provisional return filling and the balance 50% payment of full year's income tax liability
- 30th** IND - with year end of May 2022
Final income tax return filling and payment of balance income tax liability if any
- 30th** IND - with year end of August 2023
1st provisional return filling and 25% payment of full year's tax liability
- 30th** IND - with year end of May 2023
2nd amendment of provisional return filling and 25% payment of full year's tax liability
- 30th** IND - with year end of February 2023
3rd amendment of provisional return filling and 25% payment of full year's tax liability
- 30th** IND - with year end of November 2022
4th amendment of provisional return filling and 25% payment of full year's tax liability

NI - Non-Individual Taxpayer IND - Individual Taxpayer

November 2022

11

	Sun	Mon	Tue	Wed	Thu	Fri	Sat
44							
			1	2	3	4	5
45							
	6	7	8	9	10	11	12
46							
	13	14	15	16	17	18	19
47							
	20	21	22	23	24	25	26
48							
	27	28	29	30			

Healthcare

Healthcare is a rapidly growing industry. Providers and commissioners of healthcare face the challenges of rising public expectations, changing demographics, advances in medical technology drive to achieve greater efficiency in the delivery of healthcare services. Grant Thornton focuses on solutions. We pride ourselves on listening to our clients, working in an open and flexible manner and developing innovative, bespoke responses to the issues you face.

MONTHLY COMPLIANCES DUE IN DECEMBER 2022

- 2nd** Filling of Return and Payment of Local Hotel Tax for the month of November 2022
- 15th** Filling of Return and Payment of Withholding Tax for the month of November 2022
- 15th** Filling of Return and Payment of VAT for the month of November 2022
- 15th** Filling of Return and Payment of Excise Duty for the month of November 2022
- 15th** Filling of Return and Payment of PAYE for the month of November 2022
- 15th** Filling of Return and Payment of NSSF for the month of November 2022

INCOME TAX COMPLIANCES DUE IN DECEMBER 2022

- 31st** NI - with year end of June 2022
Final income tax return filling and payment of balance income tax liability
- 31st** NI - with year end of June 2023
1st Provisional return filling and 50% payment of full year's income tax liability
- 31st** NI - with year end of December 2022
Amendment of provisional return filling and the balance 50% payment of full year's income tax liability
- 31st** IND - with year end of June 2022
Final income tax return filling and payment of balance income tax liability
- 31st** IND - with year end of September 2023
1st provisional return filling and 25% payment of full year's tax liability
- 31st** IND - with year end of June 2023
2nd amendment of provisional return filling and 25% payment of full year's tax liability
- 31st** IND - with year end of March 2023
3rd amendment of provisional return filling and 25% payment of full year's tax liability
- 31st** IND - with year end of December 2022
4th amendment of provisional return filling and 25% payment of full year's tax liability"

NI - Non-Individual Taxpayer IND - Individual Taxpayer

December 2022

12

	Sun	Mon	Tue	Wed	Thu	Fri	Sat
48							
					1	2	3
49							
	4	5	6	7	8	9	10
50							
	11	12	13	14	15	16	17
51							
	18	19	20	21	22	23	24
52							
	25	26	27	28	29	30	31

25th December | Christmas Day

26th December, Boxing Day

Individual private clients

We work closely with private and family-owned businesses, entrepreneurs and individuals. We will get to know your business structure, policies and practices, so we can deliver a personal service that is sensitive and responsive to your own business needs and interests.



RANGE OF SERVICES

Audit and assurance

- Financial statement audits
- Grant audits
- Project audits
- Statutory audits
- Stock audits

Business risk services

- Internal audit
- Governance and risk management
- Risk modelling services
- Operational advisory and improvement services
- Forensic services

Transaction services

- M&A advisory
- Capital markets
- Project financing
- Due diligence
- Feasibility studies
- Valuations
- Corporate finance advisory
- Debt structuring & advisory
- Infrastructure project advisory

Recovery and reorganisation

- Corporate restructuring
- Recovery

Public sector

- Public sector assurance and consulting
- Dispute management
- Expert dispute resolution and advisory
- Fraud and corruption solutions
- Forensic investigations
- Litigation support
- Asset tracing and verification

Tax

- Direct international tax
- Global mobility services
- Indirect international taxes
- Support during KRA audits and compliance checks
- Individual tax
- Transfer pricing

Business Process Solutions

- Bookkeeping/financial accounting
- Payroll processing
- Monthly management accounts
- Preparation of financial statements

Secretarial services

- Establishing a presence in Uganda
- Incorporation of companies
- Manufacturing and trading licenses
- Work and residence permits.
- Statutory compliance
- Corporate governance services

Human resource solutions

- Talent Acquisition
- Competency Assessment
- Employee Engagement
- Human Resource Administration
- HR Diagnostics
- Organization Design
- Salary survey and benchmarking
- Out-staffing Services

For any further information or guidance on other services offered by Grant Thornton, kindly contact us and we shall be pleased to serve you.

OFFICES AND TAX CONTACTS IN AFRICA

COUNTRY	GT SERVICE OFFICE	TEL NUMBERS	GT TAX CONTACTS	EMAIL ADDRESS
Algeria	Algiers	+213 (0)23 375 231	Rafik Boussa	rafik.boussa@dz.gt.com
Botswana	Gaborone	+267 3952313	Dinesh Mallan	dinesh.mallan@bw.gt.com
Cameroon	Douala	+237 6 96 96 28 28	Jacques Bakelak	jacques.bakelak@cm.gt.com
Egypt	Cairo	+20 2 25744810 +20 2 25770785 +20 2 25762490	Tarek Youssef	tyoussef@gtegypt.org
Ethiopia	Addis Ababa	+251 (0) 11 552 4085	Seid Abdela Mohammed	seid.abdella@et.gt.com
Gabon	Libreville	+241 761568, +241 742831	Dina Gay	dina.gay@ga.gt.com
Ghana	Accra	+233 302 779065	Emmanuel Offei	emmanuel.offei@boatengoffei.com
Guinea	Conakry	+224 62621303	Amadou Barry	amadou.barry@gn.gt.com
Ivory Coast	Abidjan	+225 22426650	Jean-Louis Dattie	jean-louis.dattie@ci.gt.com
Kenya	Nairobi	+254 20 3747681 +254 20 2699539	Parag Shah Samuel Mwaura	parag.shah@ke.gt.com samuel.mwaura@ke.gt.com
Libya	Tripoli	+218 21 3339275	Hakem Badi	hakem.badi@libyaconsult-badi.com
Malawi	Lilongwe	+265 1820744	Hastings Nyirenda	hastings.nyirenda@mw.gt.com
Madagascar	Antananarivo	+230 2120202	Sattar Hajee Abdoula	sattar.abdoula@mu.gt.com
Mauritius	Port Louis	+230 2120202	Sattar Hajee Abdoula	sattar.abdoula@mu.gt.com

OFFICES AND TAX CONTACTS IN AFRICA

COUNTRY	GT SERVICE OFFICE	TEL NUMBERS	GT TAX CONTACTS	EMAIL ADDRESS
Morocco	Casablanca	+212 522544800	Sanaa Al Mokri	sana.almokri@ma.gt.com
Namibia	Windhoek	+264 61 381200	Uwe H Selck	uwe.selck@na.gt.com
Nigeria	Lagos	+234 (0)803 3224515 +234 (0)803 3327484	Nkwachi U Abuka	nkwachi.abuka@ng.gt.com
Senegal	Dakar	+221 338 897 070	Mansour Gaye	mansour.gaye@sn.gt.com
South Africa	National	+2711 231 0600	Veli Ntombela	veli.ntombela@sng.gt.com
Tanzania	Dar es Salaam	+255 784 936888	Ketan Shah Muntazir Fazel	ketan.shah@tz.gt.com, muntazir.fazel@tz.gt.com
Tunisia	Tunis	+216 71950095	El Abed Akram	akram.elabed@tn.gt.com
Togo	Lome	+228 22258774	Biva Ouro-Doni	biva.ourodoni@tg.gt.com
Uganda	Kampala	+256 200 907 333	Anil Patel	tax@ug.gt.com
Zambia	Lusaka	+260 211227722/8	Rodia M Musonda	rodia.musonda@zm.gt.com
	Kitwe	+260 212225904,+260 212225733 +260 212228574		
Zimbabwe	Harare	+263 4 442511-4	Christina Muzerengi	christina@camelsa.co.zw

January						
Su	M	Tu	W	Th	F	Sa
1	2	3	4	5	6	7
8	9	10	11	12	13	14
15	16	17	18	19	20	21
22	23	24	25	26	27	28
29	30	31				

February						
Su	M	Tu	W	Th	F	Sa
			1	2	3	4
5	6	7	8	9	10	11
12	13	14	15	16	17	18
19	20	21	22	23	24	25
26	27	28				

March						
Su	M	Tu	W	Th	F	Sa
			1	2	3	4
5	6	7	8	9	10	11
12	13	14	15	16	17	18
19	20	21	22	23	24	25
26	27	28	29	30	31	

April						
Su	M	Tu	W	Th	F	Sa
						1
2	3	4	5	6	7	8
9	10	11	12	13	14	15
16	17	18	19	20	21	22
23	24	25	26	27	28	29
30						

May						
Su	M	Tu	W	Th	F	Sa
	1	2	3	4	5	6
7	8	9	10	11	12	13
14	15	16	17	18	19	20
21	22	23	24	25	26	27
28	29	30	31			

June						
Su	M	Tu	W	Th	F	Sa
				1	2	3
4	5	6	7	8	9	10
11	12	13	14	15	16	17
18	19	20	21	22	23	24
25	26	27	28	29	30	

July						
Su	M	Tu	W	Th	F	Sa
						1
2	3	4	5	6	7	8
9	10	11	12	13	14	15
16	17	18	19	20	21	22
23	24	25	26	27	28	29
30	31					

August						
Su	M	Tu	W	Th	F	Sa
		1	2	3	4	5
6	7	8	9	10	11	12
13	14	15	16	17	18	19
20	21	22	23	24	25	26
27	28	29	30	31		

September						
Su	M	Tu	W	Th	F	Sa
					1	2
3	4	5	6	7	8	9
10	11	12	13	14	15	16
17	18	19	20	21	22	23
24	25	26	27	28	29	30

October						
Su	M	Tu	W	Th	F	Sa
1	2	3	4	5	6	7
8	9	10	11	12	13	14
15	16	17	18	19	20	21
22	23	24	25	26	27	28
29	30	31				

November						
Su	M	Tu	W	Th	F	Sa
			1	2	3	4
5	6	7	8	9	10	11
12	13	14	15	16	17	18
19	20	21	22	23	24	25
26	27	28	29	30		

December						
Su	M	Tu	W	Th	F	Sa
					1	2
3	4	5	6	7	8	9
10	11	12	13	14	15	16
17	18	19	20	21	22	23
24	25	26	27	28	29	30
31						